

THE BRAIN

```
graph TD; A[THE BRAIN] --> B[Brain Stem]; A --> C[Limbic System]; A --> D[Cerebral Cortex];
```

Brain Stem

- Medulla
- Pons
- Thalamus
- Reticular formation
- Cerebellum

Limbic System

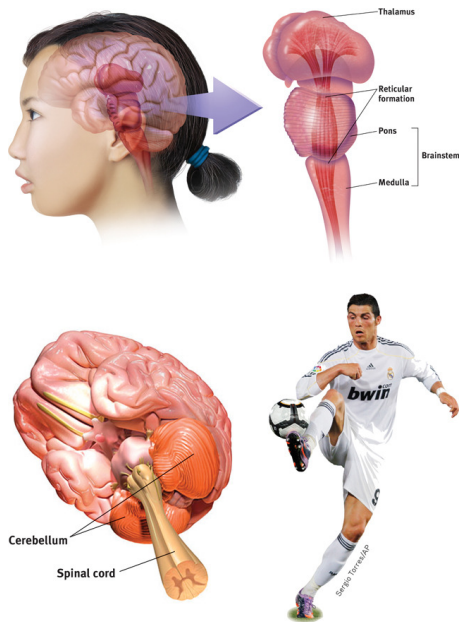
- Amygdala
- Hypothalamus
- Hippocampus

Cerebral Cortex

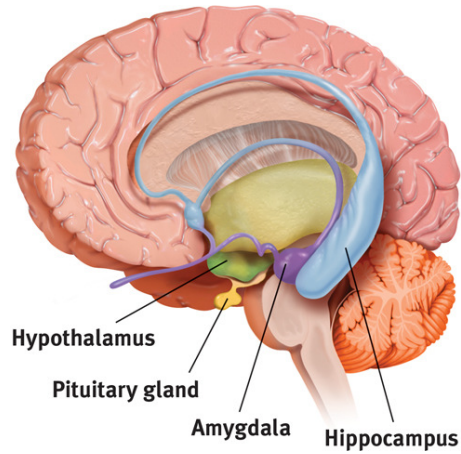
- Frontal lobe
 - Prefrontal cortex
 - Broca's Area
 - Primary motor cortex
- Parietal lobe
 - Somatosensory cortex
- Occipital lobe
 - Primary visual Cortex
- Temporal lobe
 - Primary auditory cortex
 - Wernicke's Area
- Association Areas
- Corpus Callosum

THE BRAIN

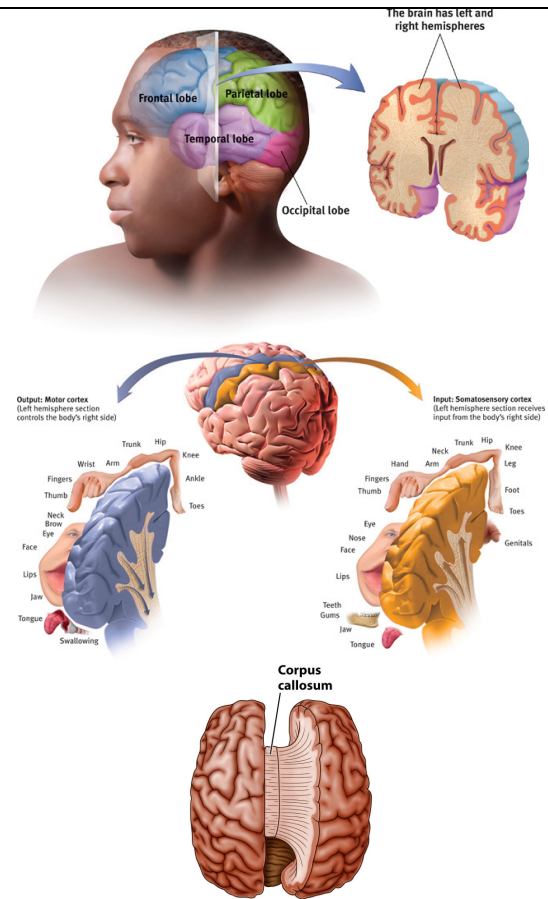
Brain Stem



Limbic System



Cerebral Cortex



The Brain Stem and Thalamus

Figure 2.15, page 69

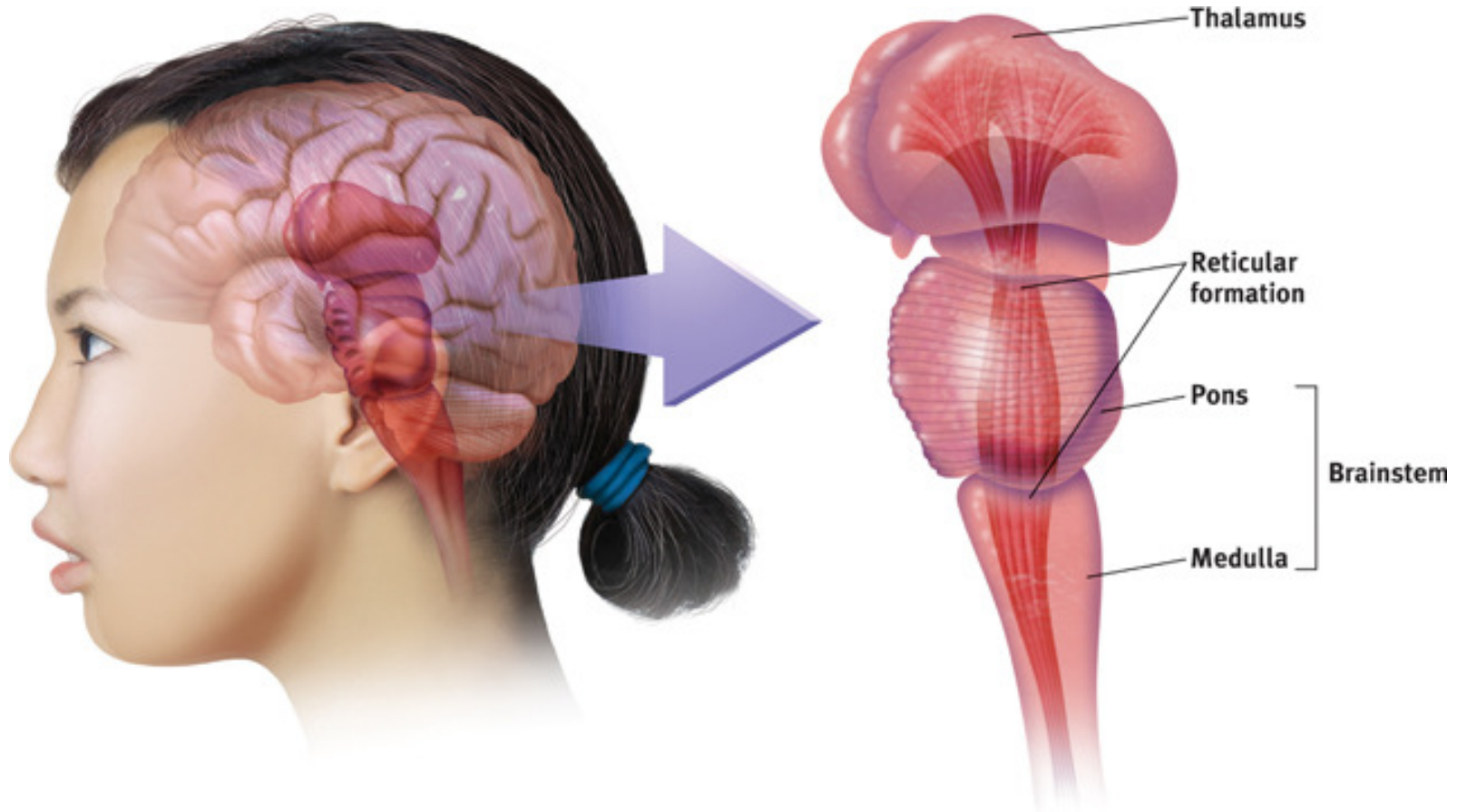
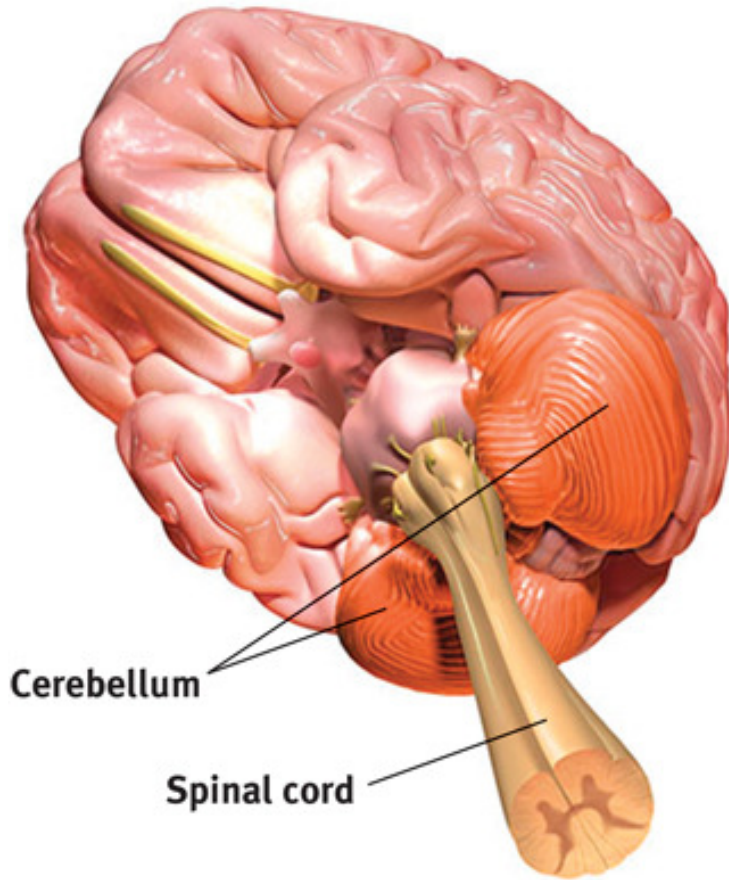


image source: Myers and DeWall, Psychology, 11th edition, 2015

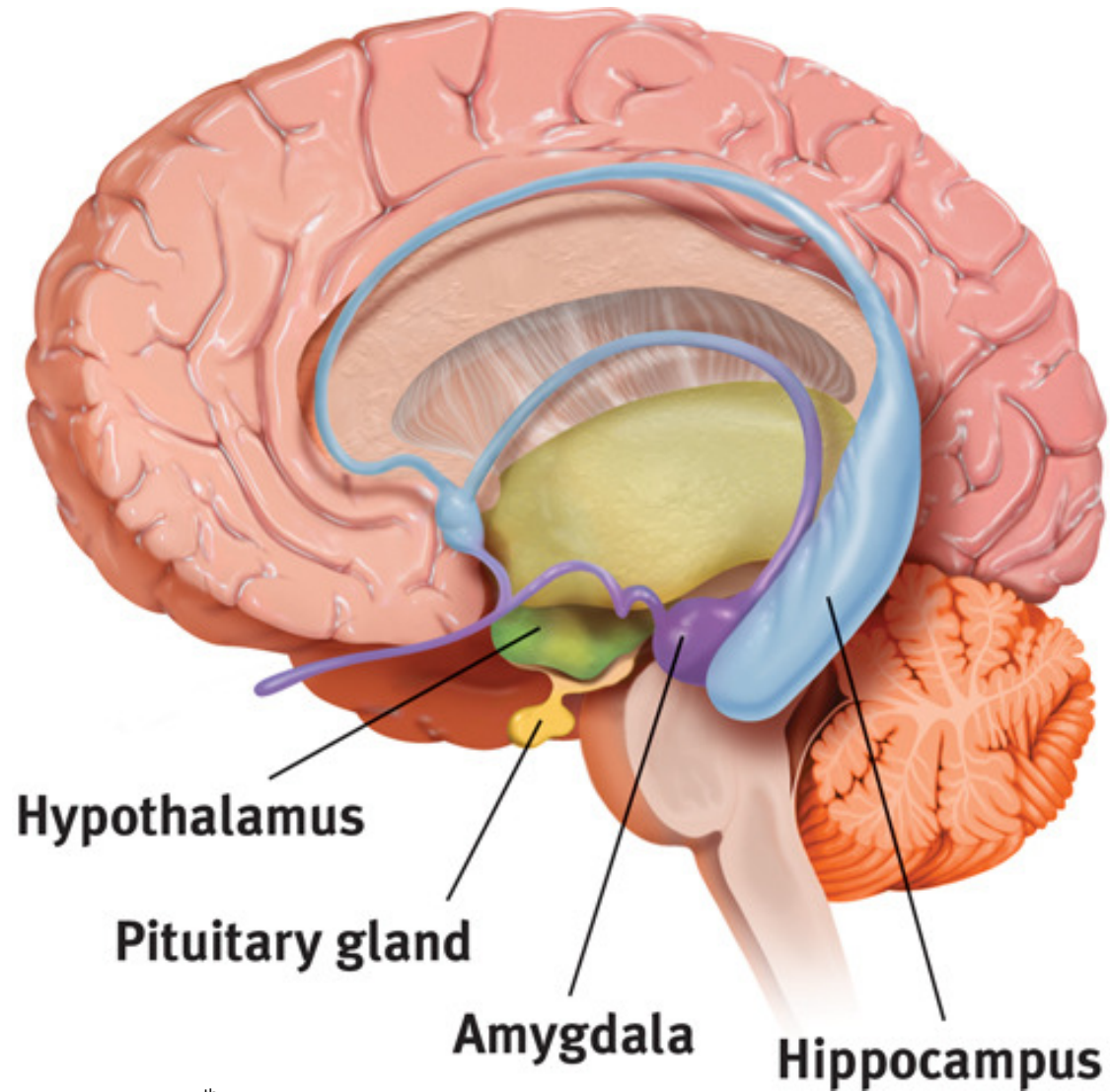
The Cerebellum

Figure 2.17, page 70



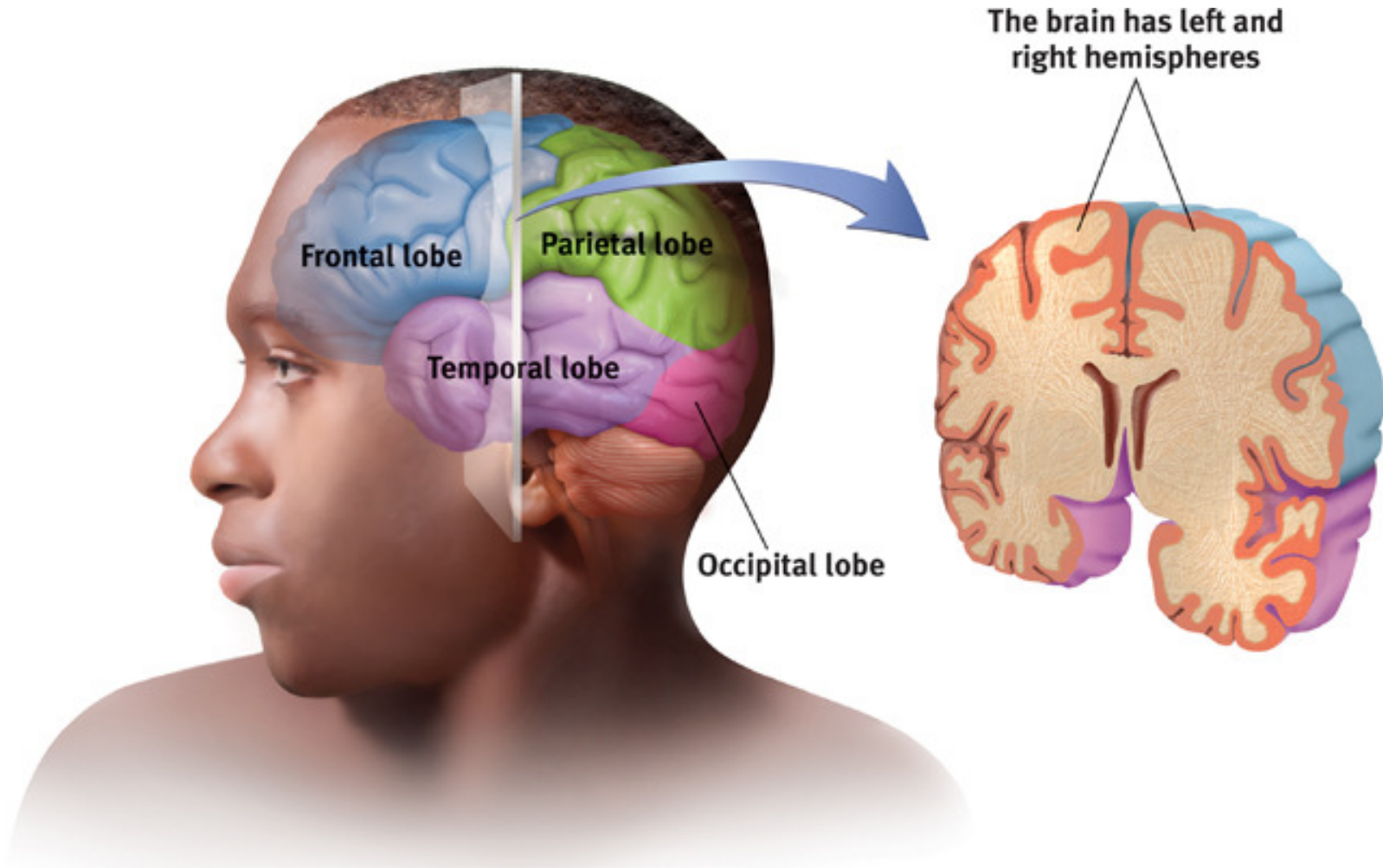
The Limbic System

Figure 2.18, page 71



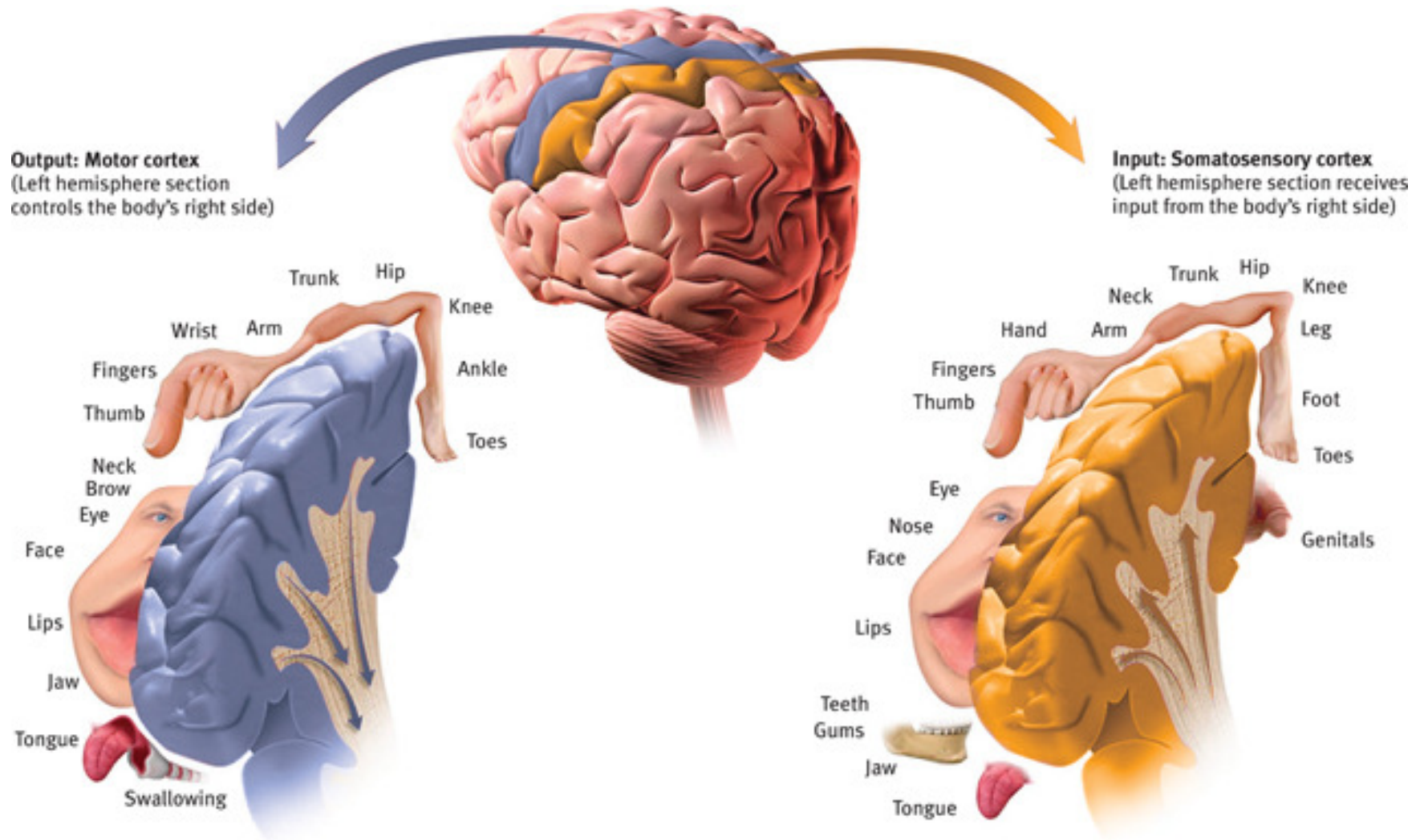
Cerebral Cortex: The Cortex and its Basic Subdivisions

Figure 2.23, page 75

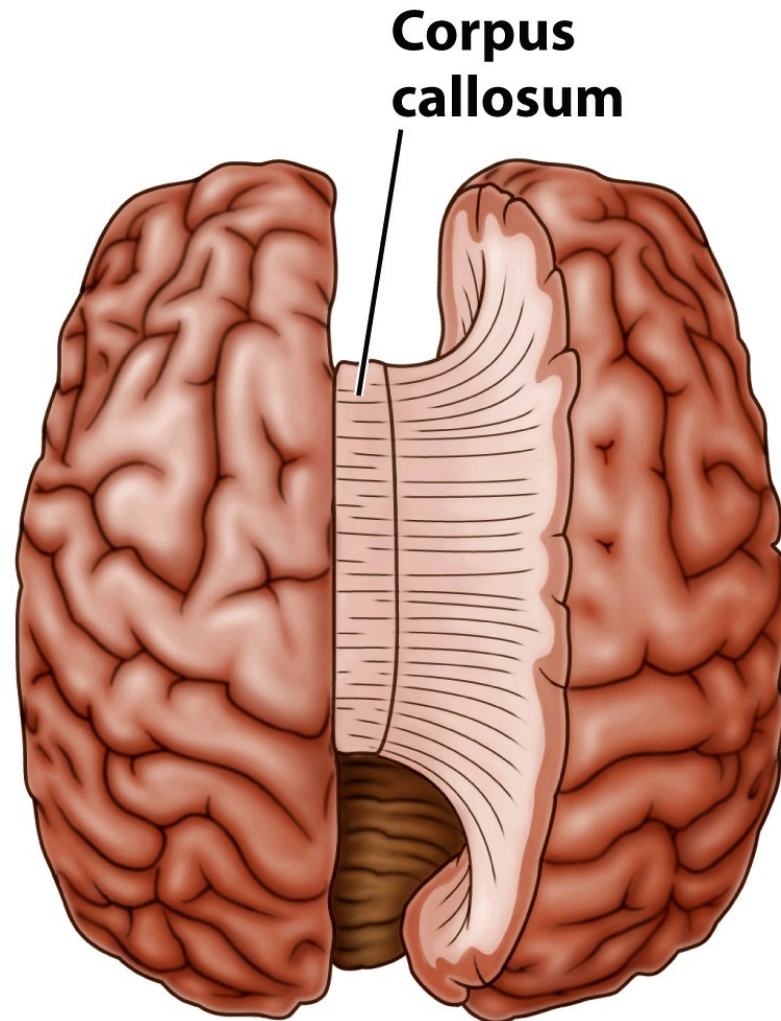


Cerebral Cortex: Left hemisphere tissue devoted to each body part in the motor cortex and the somatosensory cortex

Figure 2.24, page 76



Cerebral Cortex: The Corpus Callosum (not from your textbook)



Language Areas of the Brain

Image Source: Psychology (2008), Hockenbury and Hockenbury

